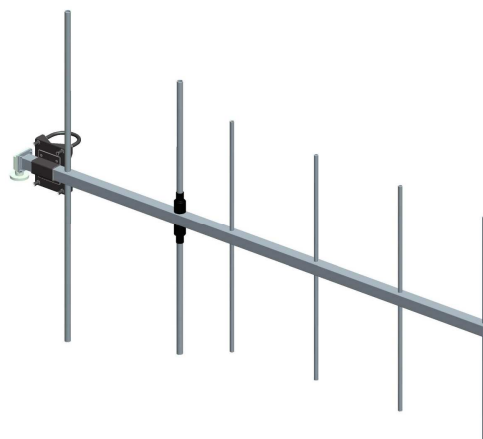


## BAN0112FXA BAN0112SXA

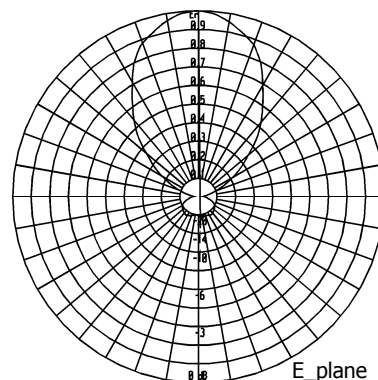
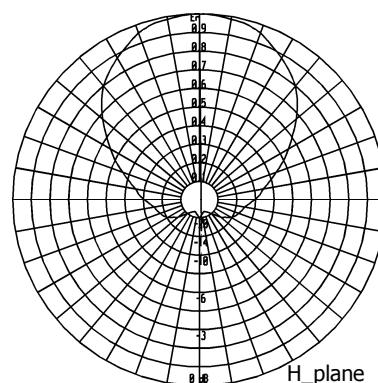
**Six Elements  
Yagi Antenna**

**156÷174 MHz**

Type	BAN0112FXA	BAN0112SXA dismountable
Frequency [MHz]	156÷174 MHz	
Impedance	50 $\Omega$	
V.S.W.R.	<1.40	
Gain	9.5 dBi	
HPBW		
E-plane	$\pm 27^\circ$	
H-plane	$\pm 36^\circ$	
Polarization	Vertical or Horizontal	
Input connector	N female miter elbow	
option 1	7/8" EIA flange miter elbow	
option 2	7/16 female miter elbow	
Max power	500 W (with N connector)	
Survival wind velocity	180 km/h	
Wind load at 160 km/h		
Frontal	133 N	
Lateral	217 N	
Dimensions	160x100x6 cm	
Packing type	cardboard box	
Dimensions [cm]	162x102x7	162x16x7.5
Net weight [kg]	5.3	5.3
Gross weight [kg]	9	6.5

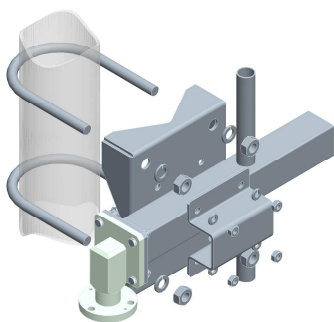


### RADIATION PATTERN



External structures are made of stainless steel as well as nuts and screws. All metallic parts are connected to the ground. Each antenna is sealed and pressurisable.

Input connector is nickel plated while internal lines are made of silver plated brass. The revolving miter elbow can be oriented to make the feeder connection easier



### MOUNTING SYSTEM

The antenna is supplied with pipe mount for both horizontal and vertical polarization.

Standard option for pole:  
Ø 60÷114 mm

These directive antennas can be used in vertical or horizontal polarization to set up systems having directive, semidirective and omnidirectional diagrams.