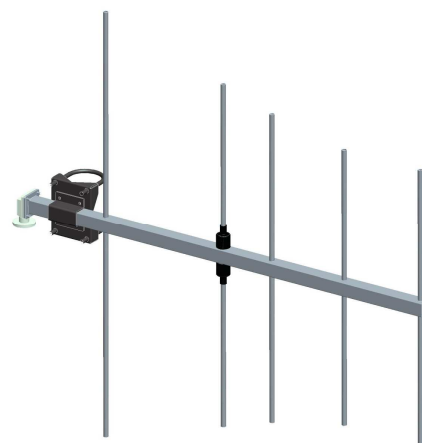
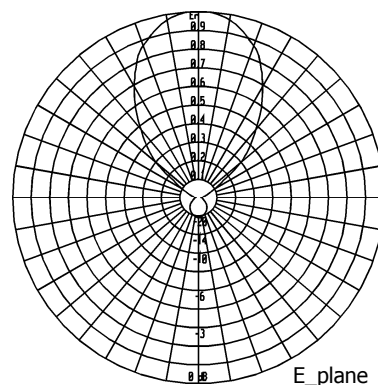
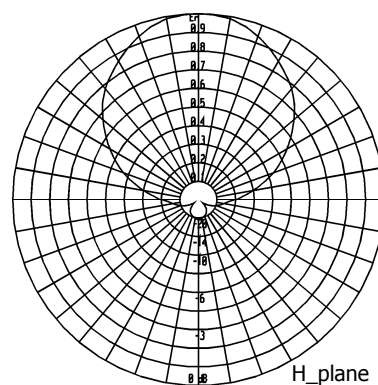


BAN0114FXA

**Five Elements
Yagi Antenna**

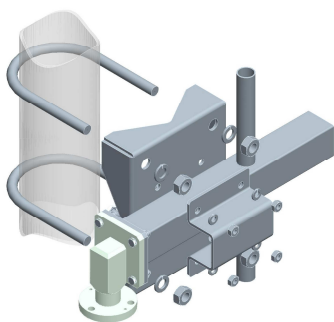
156÷174 MHz

Type	BAN0114FXA
Frequency	156÷174 MHz
Impedance	50 Ω
V.S.W.R.	< 1.25
Gain	9 dBi
HPBW	
E-plane	$\pm 29^\circ$
H-plane	$\pm 47^\circ$
Polarization	Horizontal or Vertical
Input connector	N female miter elbow
option 1	7/8" EIA flange miter elbow
option 2	7/16 female miter elbow
Max power	500 W (with N connector)
Survival wind velocity	180 km/h
Wind load at 160 km/h	
Frontal	90 N
Lateral	203 N
Dimensions	117x110x6 cm
Packing type	cardborad box
dimensions	120x112x12 cm
Net weight	5 kg
Gross weight	8 kg

**RADIATION PATTERN**

External structures are made of stainless steel as well as nuts and screws. All metallic parts are connected to the ground. Each antenna is sealed and pressurisable.

Input connector is nickel plated while internal lines are made of silver plated brass. The revolving miter elbow can be oriented to make the feeder connection easier

**MOUNTING SYSTEM**

The antenna is supplied with pipe mount for both horizontal and vertical polarization.

Standard option for pole:
 $\varnothing 60\div 114$ mm

These directive antennas can be used in vertical or horizontal polarization to set up systems having directive, semidirective and omnidirectional diagrams.