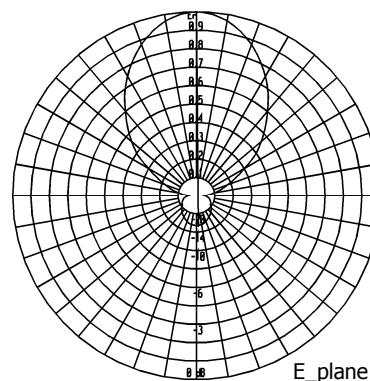
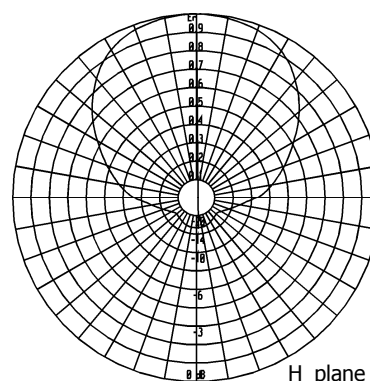


BAN011..SXR**Three Elements Yagi Antenna****52.5 ÷ 88 MHz**

Type	BAN011ASXR	BAN011BSXR	BAN011CSXR
Frequency [MHz]	52.5÷59.5	61÷68	81÷88
Impedance		50 Ω	
V.S.W.R.		≤ 1.35	
Gain		4.5 dBd	
HPBW			
E-plane		$\pm 33^\circ$	
H-plane		$\pm 52^\circ$	
Polarization		Horizontal or Vertical	
Input connector		7/8" EIA flange miter elbow	
option 1		7/16 female miter elbow	
Max power		1.5 kW	
Survival wind velocity		180 km/h	
Wind load at 160 km/h			
Frontal [N]	90	88	66
Lateral [N]	216	207	167
Dimensions [cm]	260x226x13	255x212x13	190x180x13
Packing type		cardboard box	
dimensions		263x12x12 cm	
Net weight [kg]	12	10.5	8
Gross weight [kg]	13.5	12	9.5



This antenna is dismountable and is shipped completely disassembled.

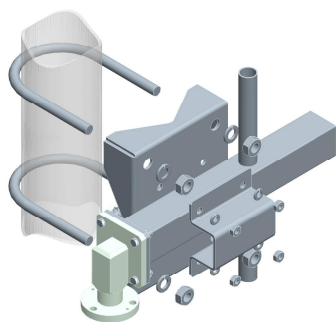
RADIATION PATTERN

External structures are made of stainless steel as well as nuts and screws.

All metallic parts are connected to the ground.

Each antenna is sealed and pressurisable.

Input connector is nickel plated while internal lines are made of silver plated brass. The revolving miter elbow can be oriented to make the feeder connection easier.

**MOUNTING SYSTEM**

The antenna is supplied with pipe mount for both horizontal and vertical polarization.

Standard option for pole:
 $\varnothing 60 \div 114$ mm

These directive antennas can be used in vertical or horizontal polarization to set up systems having directive, semidirective and omnidirectional diagrams.