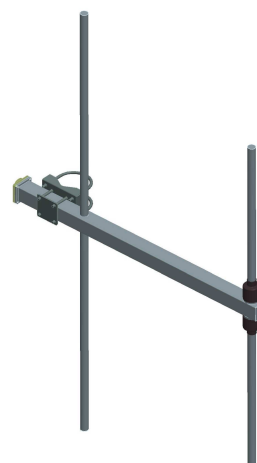
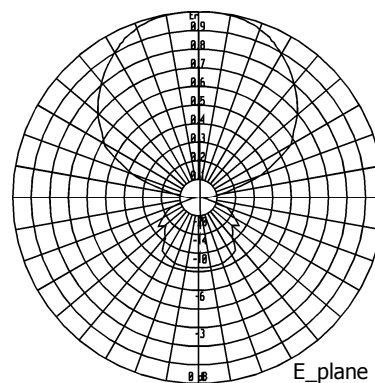
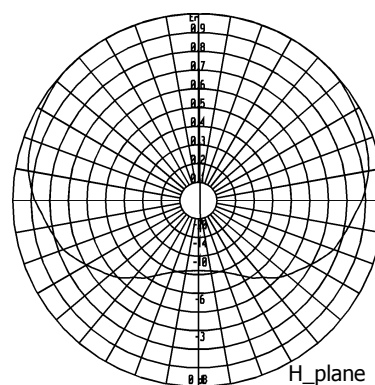


BAN0169B

**Two Elements
Yagi Antenna**

87.5÷108 MHz

Type	BAN0169B
Frequency	87.5÷108 MHz
Impedance	50 Ω
V.S.W.R.	< 1.35
Gain	2.7 dBd
HPBW	
E-plane	$\pm 49^\circ$
H-plane	$\pm 118^\circ$
Polarization	Horizontal or Vertical
Input connector	7/8" EIA flange
Max power	5 kW
Survival wind velocity	200 km/h
Wind load at 160 km/h	
Frontal	104 N
Lateral	216 N
Dimensions	182x117x8 cm
Packing type	cardboard box
dimensions	189x123x18 cm
Net weight	10.5 kg
Gross weight	12.5 kg

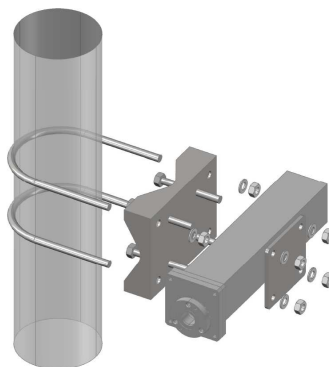
**RADIATION PATTERN**

External structures are made of stainless steel as well as nuts and screws.

All metallic parts are connected to the ground.

Each antenna is sealed and pressurisable.

Input connector is nickel plated while internal lines are made of silver plated brass.

**MOUNTING SYSTEM**

The antenna is supplied with pipe mount for both horizontal and vertical polarization.

Standard option for pole:
 $\varnothing 60 \div 114$ mm

These directive antennas can be used in vertical or horizontal polarization to set up systems having directive, semidirective and omnidirectional diagrams.