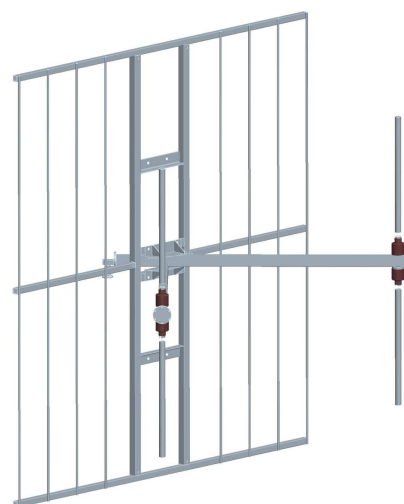


BAN020C

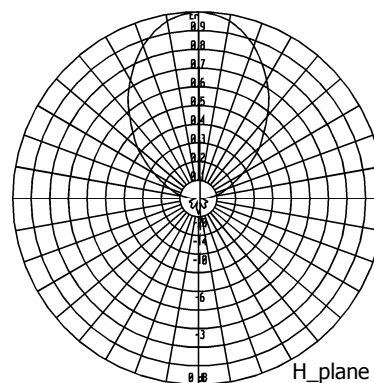
Linear polarized
Panel Antenna

87.5÷108 MHz

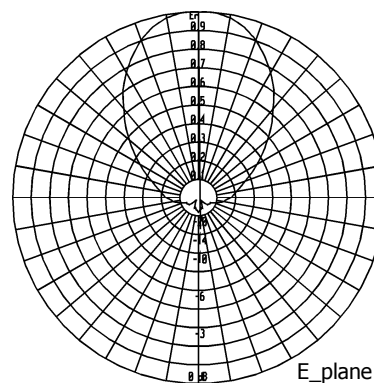
Type	BAN020C
Frequency	87.5÷108 MHz
Impedance	50 Ω
V.S.W.R.	< 1.15
Gain	7 dBd
HPBW	
E-plane	± 36°
H-plane	± 31°
Polarization	Vertical or Horizontal
Input connector	7/8" EIA Flange miter elbow
Max power	5 kW
Survival wind velocity	200 km/h
Wind load at 160 km/h	
Frontal	1600 N
Lateral	980 N
Dimensions	200x220x100 cm
Packing type	wooden crate
dimensions	210x230x30 cm
Net weight	51 kg
Gross weight	100 kg



RADIATION PATTERN



H_plane

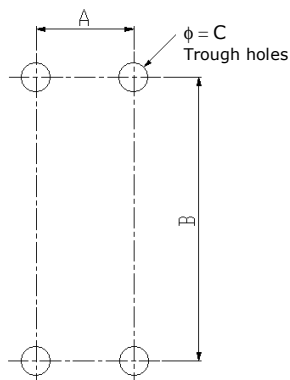


E_plane

This completely sealed antenna has a sturdy construction. The reflector is made of hot deep galvanised steel, while dipoles and screw are made of stainless steel. All metallic parts are connected to the ground.

Each antenna is sealed and pressurisable.

Input connector is nickel plated while internal lines are made of silver plated brass. The revolving miter elbow can be oriented to make the feeder connection easier



MOUNTING SYSTEM

On frame according to the mounting lay-out beside, where:

- A = 130 mm
- B = 1000 mm
- C = 14 mm

Pole mount available on request.

These panels can be used in vertical or horizontal polarization to set up systems having directive, semidirective and omnidirectional diagrams.

Systems made up with 020C panels can be designed on customer specifications.