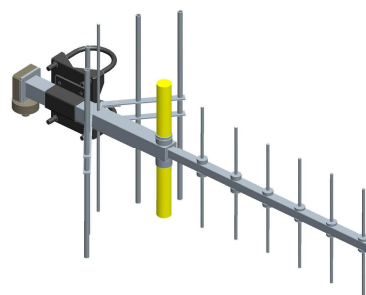


BAN0210A

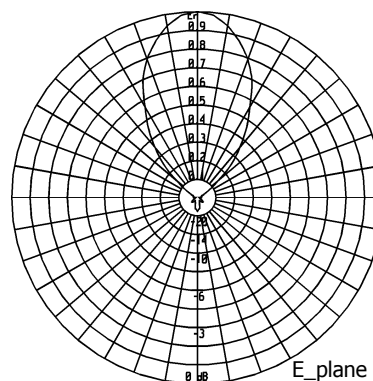
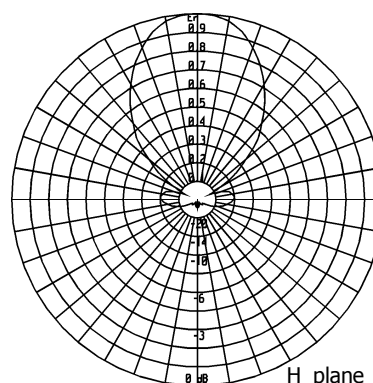
**Eight Elements
Yagi Antenna with Reflector**

435÷470 MHz

Type	BAN0210A
Frequency [MHz]	435÷450
Impedance	50 Ω
V.S.W.R.	≤ 1.3
Gain	10 dBi
HPBW	
E-plane	$\pm 24^\circ$
H-plane	$\pm 32^\circ$
Polarization	Horizontal or Vertical
Input connector	N female miter elbow
option 1	7/8" EIA flange miter elbow
option 2	7/16 miter elbow
Max power	300 W
Survival wind velocity	200 km/h
Wind load at 160 km/h	
Frontal	70 N
Lateral	180 N
Dimensions	310x450x944 cm
Packing type	cardboard box
dimensions	100x45x7 cm
Net weight	4.2 kg
Gross weight	5.7 kg

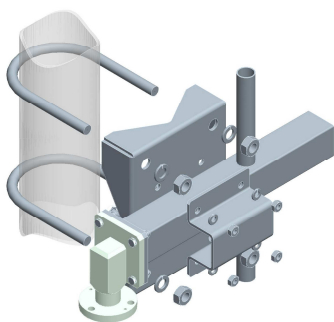


This antenna is provided with a double reflector foldable

RADIATION PATTERN

This waterproof yagi antenna is made of stainless steel as well as nuts and screws. Dipole are protected by a fibreglass radome completely sealed. All metallic parts are connected to the ground.

Input connector is nickel plated while internal lines are made of silver plated brass. The revolving miter elbow can be oriented to make the feeder connection easier

**MOUNTING SYSTEM**

The antenna is supplied with pipe mount for both horizontal and vertical polarization.

Standard option for pole:
 $\varnothing 60 \div 114$ mm