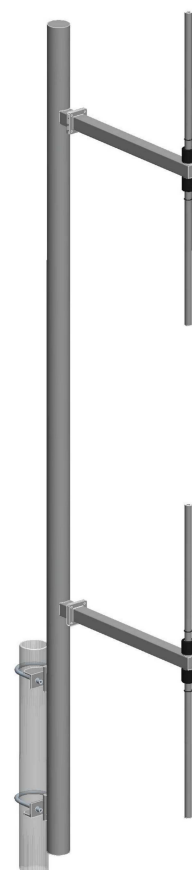


BAN032MT**Two stacked Dipoles
with Reflector****156-174 MHz**

Type	BAN032MT
Frequency	156÷174 MHz
Impedance	50 Ω
V.S.W.R.	< 1.2
Gain	7 dBi
HPBW	
E-plane	$\pm 18^\circ$
H-plane	$\pm 120^\circ$
Polarization	Vertical
Input connector	N female
Max power	500 W
Survival wind velocity	180 km/h
Wind load at 160 km/h	250 N
Dimensions	255x70x27 cm
Packing type	wooden crate
dimensions	270x80x37 cm
Net weight	35 kg
Gross weight	90 kg



The standard version of this waterproof antenna is realised with hot galvanised steel; also available a stainless steel version on request.

All metallic parts are connected to ground.

Input connector is nickel plated while the internal lines are made of silver plated brass.

The antenna is supplied with pipe mount for pole with \varnothing maximum 89 mm.

RADIATION PATTERN