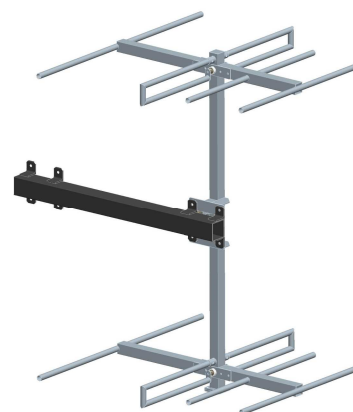


**BAN036SXAdab**

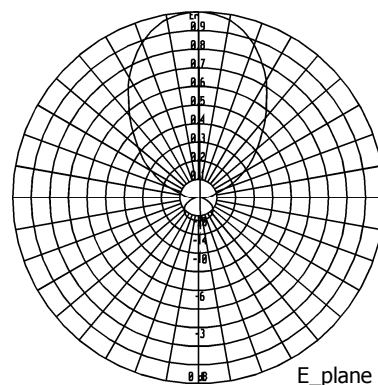
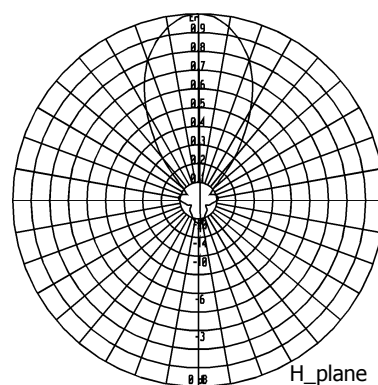
**4+4 Elements  
double Yagi Antenna**

**209÷242 MHz**

Type	BAN036SXAdab
Frequency	209÷242 MHz
Channel	H - H1 - H2 - DAB
Impedance	50 $\Omega$
V.S.W.R.	$\leq 1.10$
Gain	7.5 dBd
HPBW	
E-plane	$\pm 32^\circ$
H-plane	$\pm 25^\circ$
Polarization	Horizontal or Vertical
Input connector	7/8" EIA flange miter elbow
option 1	N female miter elbow
option 2	7/16 miter elbow
Max power	2 kW with 7/8" EIA flange
Survival wind velocity	200 km/h
Wind load at 160 km/h	
Frontal	176 N
Lateral	200 N
Dimensions	97.5x71.5x63.6 cm
Packing type	wooden crate
dimensions	115x90x20 cm
Net weight	12 kg
Gross weight	30 kg

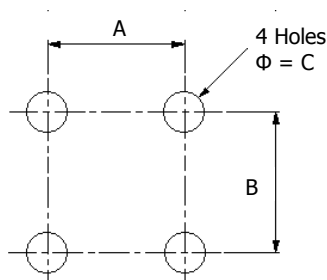


This antenna is dismountable and is shipped completely disassembled

**RADIATION PATTERN**

External structures are made of stainless steel as well as nuts and screws. All metallic parts are connected to the ground. Each antenna is sealed and pressurisable.

Input connector is nickel plated while internal lines are made of silver plated brass. The revolving miter elbow can be oriented to make the feeder connection easier

**MOUNTING SYSTEM**

On frame according to the mounting lay-out beside, where:

A = 110 mm

B = 110 mm

C = 9 mm

Pole mount available on request.