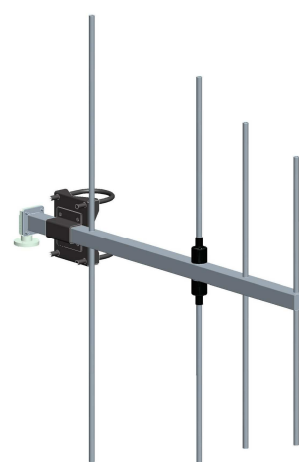


BAN06FXA BAN06SXA

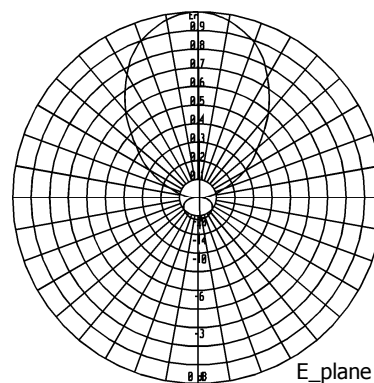
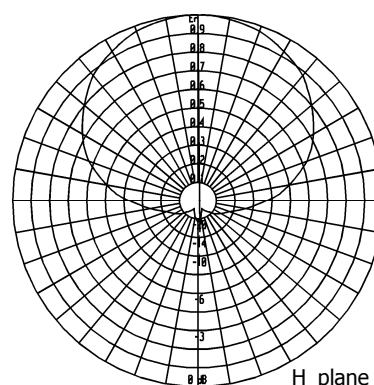
**Four Elements
Yagi Antenna**

146÷174 MHz

Type	BAN06FXA	BAN06SXA dismountable
Frequency [MHz]	146÷174 MHz	
Impedance	50 Ω	
V.S.W.R.	<1.50	
Gain	7.5 dBi	
HPBW		
E-plane	$\pm 30^\circ$	
H-plane	$\pm 57^\circ$	
Polarization	Vertical or Horizontal	
Input connector	N female miter elbow	
option 1	7/8" EIA flange miter elbow	
option 2	7/16 female miter elbow	
Max power	500 W (with N connector)	
Survival wind velocity	180 km/h	
Wind load at 160 km/h		
Frontal	68 N	
Lateral	159 N	
Dimensions [cm]	100x94x6	101x94x6
Packing type	cardboard box	
Dimensions [cm]	103x97x8	101x12x12
Net weight	4 kg	
Gross weight	7.5 kg	

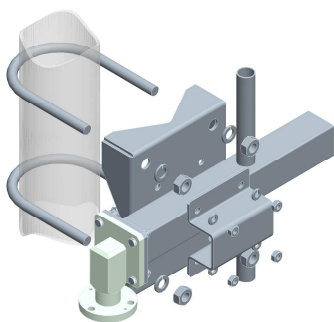


RADIATION PATTERN



External structures are made of stainless steel as well as nuts and screws. All metallic parts are connected to the ground. Each antenna is sealed and pressurisable.

Input connector is nickel plated while internal lines are made of silver plated brass. The revolving miter elbow can be oriented to make the feeder connection easier



MOUNTING SYSTEM

The antenna is supplied with pipe mount for both horizontal and vertical polarization.

Standard option for pole:
 $\varnothing 60\div 114$ mm

These directive antennas can be used in vertical or horizontal polarization to set up systems having directive, semidirective and omnidirectional diagrams.