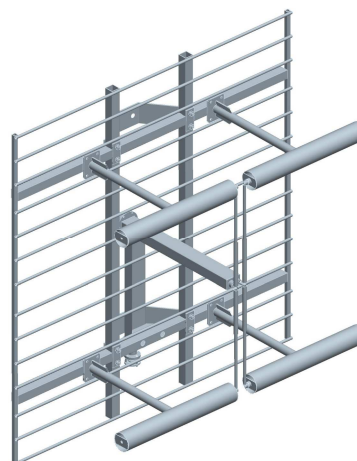


# BAN07D

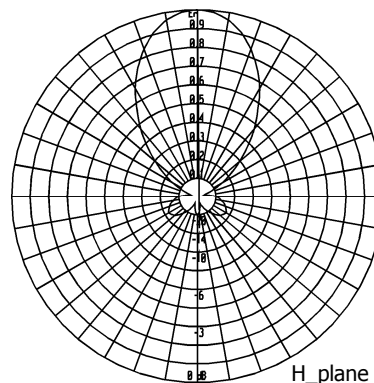
Two Dipoles  
Panel Antenna

156÷174 MHz

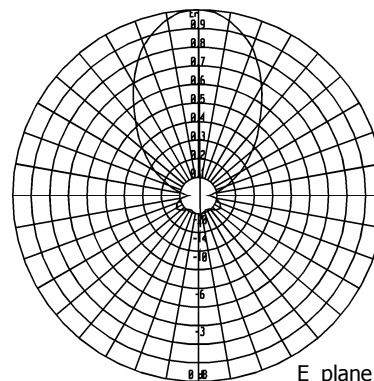
Type	BAN07D
Frequency	156÷174 MHz
Impedance	50 Ω
V.S.W.R.	≤ 1.20
Gain	10 dBi
HPBW	
E-plane	± 27°
H-plane	± 30°
Polarization	Vertical or Horizontal
Input connector	N female
option 1	7/8" EIA flange
option 2	7/16 female
Max power	500 W
Survival wind velocity	180 km/h
Wind load at 160 km/h	
Frontal	810 N
Lateral	440 N
Dimensions	140x140x60 cm
Packing type	wooden crate
dimensions	145x145x70 cm
Net weight	32 kg
Gross weight	67 kg



### RADIATION PATTERN



H\_plane

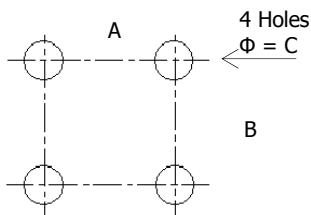


E\_plane

The reflector is made of hot deep galvanised steel, while radiating elements, as well as nuts and screws, are made of stainless steel.

Each antenna is sealed and pressurisable.

Input connector is nickel plated while internal lines are made of silver plated brass. Also available a dismountable version.



### MOUNTING SYSTEM

On frame according with the mounting lay-out beside, where:

A = 550 mm

B = 550 mm

C = 14 mm

Pole mount available on request.

These panels can be used in vertical or horizontal polarization to set up systems having directive, semidirective and omnidirectional diagrams.

Systems made up with 07D panels can be designed on customer specifications.