

BAN2000.01

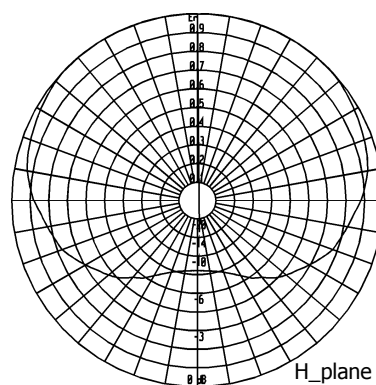
87.5÷108 MHz

Broadband FM Heavy Duty Dipole

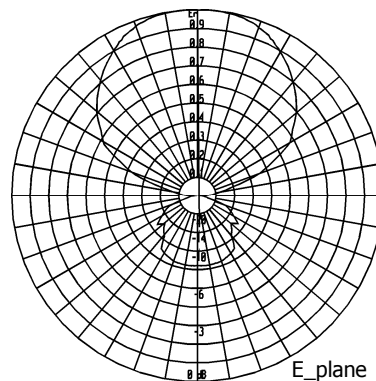
Type	BAN2000.01
Frequency	87.5÷108 MHz
Impedance	50 Ω
V.S.W.R.	≤ 1.25
Gain	2 dBd
HPBW	
E-plane	± 35°
H-plane	± 120°
Polarization	Vertical
Input connector	7/8" EIA flange
Option 1	7/16 female DIN
Option 2	1+5/8" EIA flange
Power handling	5 kW with 7/8" EIA flange 3 kW with 7/16 female DIN 10 kW with 1+5/8" EIA flange
Survival wind velocity	225 km/h
Wind load at 160 km/h	
Frontal	110 N
Lateral	215 N
Dimensions	138 x 83 cm
Net weight	12 kg



RADIATION PATTERN



H_plane

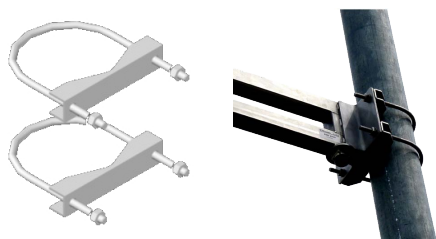


E_plane

Radiating elements, as well as nuts and screws, are made of stainless steel.
All metallic parts are connected to the ground.

MOUNTING SYSTEM

Standard mount on pipe up to φ 114 mm.



Systems made up with BAN2000 dipoles can be designed on customer specifications.