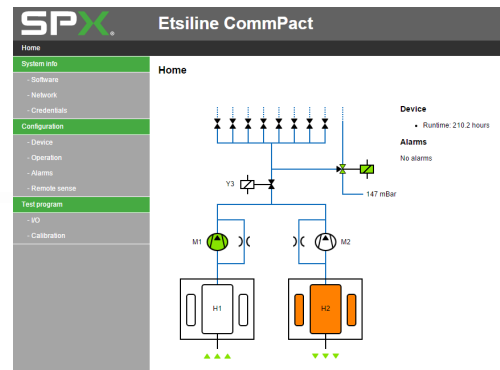


## Delair® GD-401-19"-1-SNMP



### Why delair® GD-401-19"-1-SNMP?

- **Internet communication / web interface**
- **Compact design**
- **Double compressor**
- **Dry air capacity > 400 l/h**
- **Low noise / low vibration**
- **Low energy consumption**
- **Mounting rackets included**

# Delair® GD-401-19"-1-SNMP

## Specification

Model	GD-401-19"-1-SNMP		
	230VAC		48VDC
Operation	Fully automatic and continuous		
Dry air capacity (l/h) at 20 mbar	>400		
Standard working pressure (mbar)	20-30		
other pressure ranges on request	40-80		
Power Supply (V)	240V-50/60Hz		48VDC
Power consumption			
Drying (W)	80		
Regeneration (W)	150		
Stand-by (W)	15		
Sound level dB(A)	<55		
Weight (kg)	25		
Outlet, with shut-off valve	1		
	Tubing 8 mm OD, other connections on request		
	3 and 6 outlet manifold as optional		
Location	Indoors		
Enclosure	IP40		
Ambient Temperature	-10°C - +45°C		
Relative humidity	Max. 95%		
Mounting	Width (mm)	Depth (mm)	Height (mm)
- 19"-Rack	482.6	400	122
- Wall Mounting	465	434	122
- Floor/Table mounting	465	400	128
Combined Alarms, dry contact	Low -, high pressure, Run Time		
	Humidity alarm (optional)		
Communication	TCP/IP Ethernet		
	SNMP		

### SPX FLOW TECHNOLOGY ETTEN-LEUR BV

Munnikenheiweg 41  
 4879 NE Etten-Leur  
 P: +31 76 5085568  
 F: +31 76 5085590  
 info.nl@spxflow.com