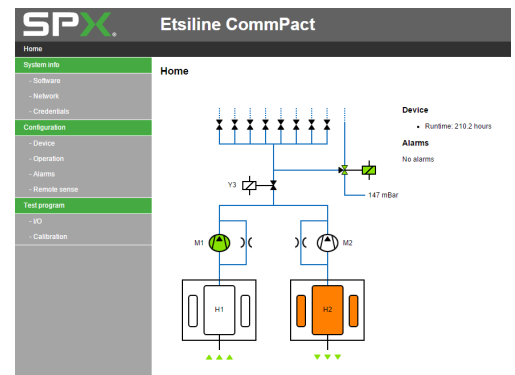


Delair® Etsiline CommPact



Why delair® Etsiline CommPact?

- **Internet communication / web interface**
- **No maintenance**
- **Compact design**
- **Standard 8 outlets, each with shut-off valve**
- **Dry air capacity > 100 l/h**
- **Low noise / low vibration**
- **Remote sense input**
- **Low energy consumption**



Delair® Etsiline CommPact

Specification

Model	Etsiline CommPact		
	100 - 240VAC		48VDC
Operation	Fully automatic and continuous		
Dry air capacity (l/h) at 20 mbar	>120		
Standard working pressure (mbar)	20-30		
other pressure ranges on request	40-80		
Power Supply (V)	100 - 240V-50/60Hz		48VDC
Power consumption			
Drying (W)	13		
Regeneration (W)	55		
Stand-by (W)	6		
Sound level dB(A)	<43		
Weight (kg)	8		
Outlets, each with shut-off valve	8		
	Tubing 6 mm OD, other connections on request		
Remote sense input	included, electronic valve		
Location	Indoors		
Enclosure	IP40		
Ambient Temperature	-10°C - +45°C		
Relative humidity	Max. 95%		
Mounting	Width (mm)	Depth (mm)	Height (mm)
- ETSI-Rack	535	200	88.9
- 19"-Rack	482.6	200	88.9
- Wall Mounting	465	234	88.9
- Floor/Table mounting	465	200	95
Combined Alarms, dry contact	Low -, high pressure, Run Time Humidity alarm (optional)		
Communication	TCP/IP Ethernet SNMP		

SPX FLOW TECHNOLOGY ETTEN-LEUR BV

Munnikenheiweg 41
4879 NE Etten-Leur
P: +31 76 5085568
F: +31 76 5085590
info.nl@spxflow.com